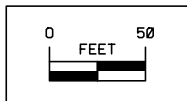


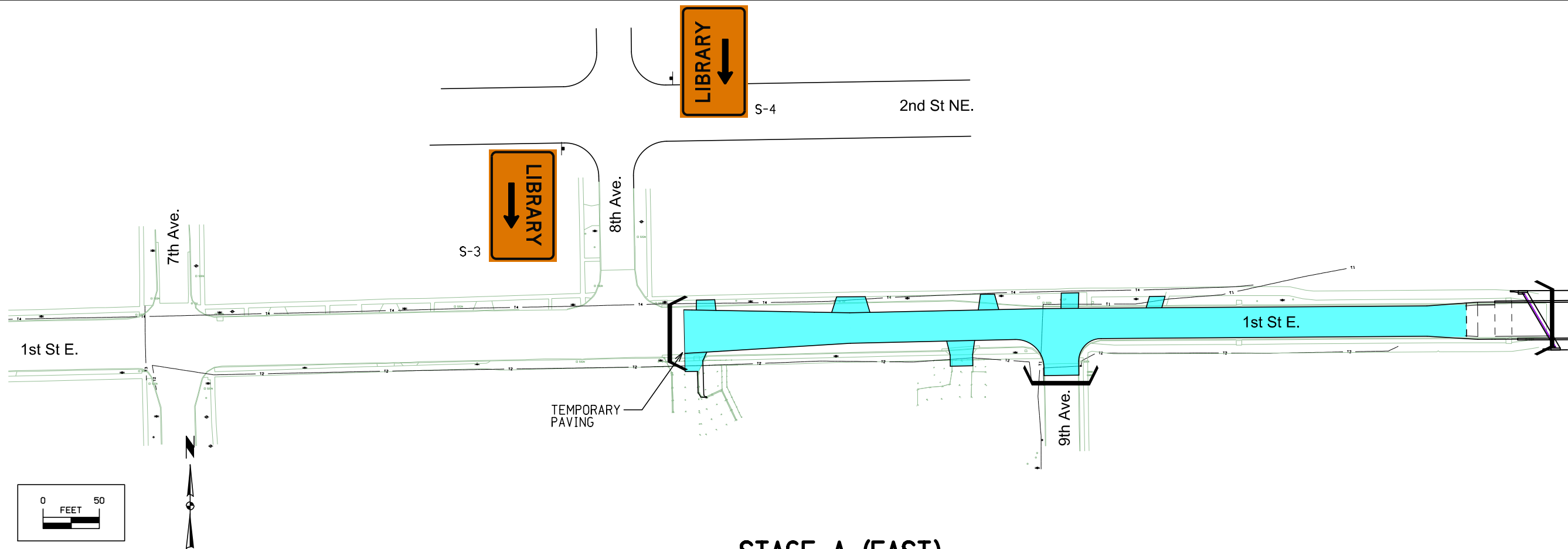
R8-3A  
 SHALL BE USED ON ALL ONE-WAY STREETS

NOTE  
 ALL DRIVEWAYS ALONG ONE WAY ROUTES  
 SHALL HAVE ONE WAY SIGNS AND A ONE  
 WAY SIGN WILL BE ADDED AT MIDBLOCK

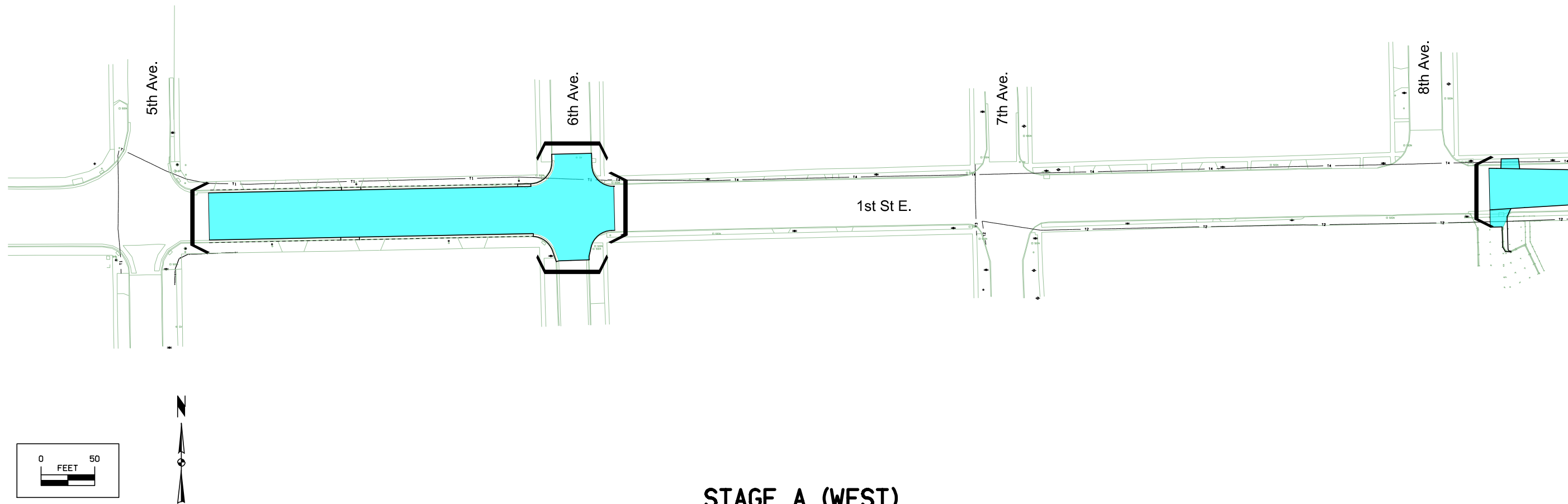
\*TEMP PAVING IS REQUIRED TO OPEN ROAD FOR  
 COUNTY FAIR AND JULY 4TH CELEBATION  
 BETWEEN STAGE 1 AND 2.



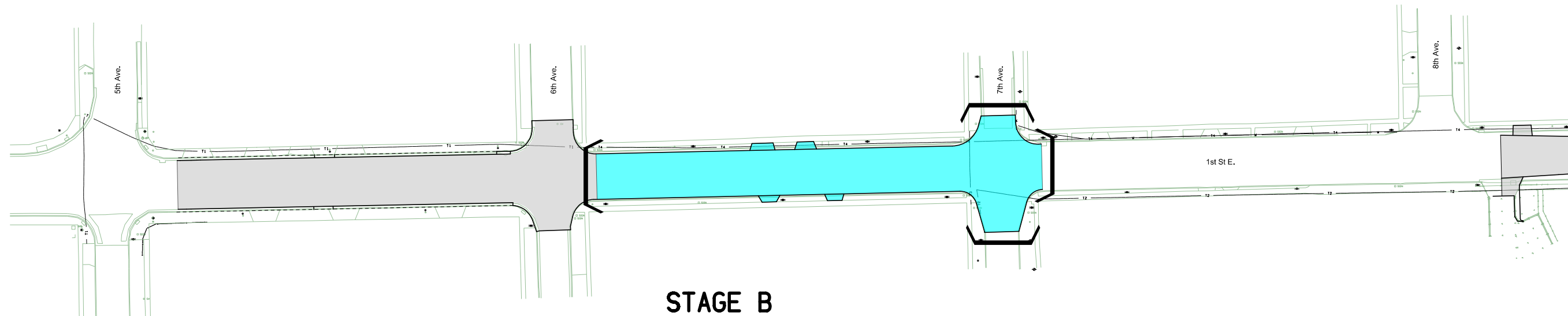
**STAGE 2**



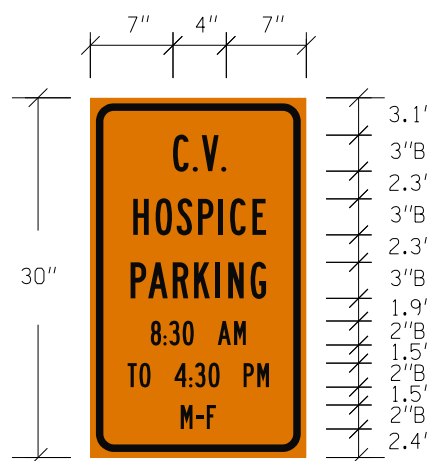
**STAGE A (EAST)**



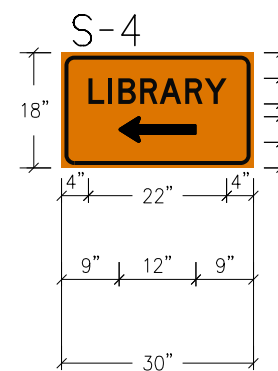
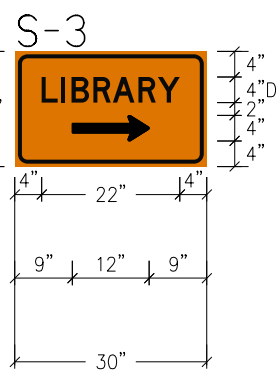
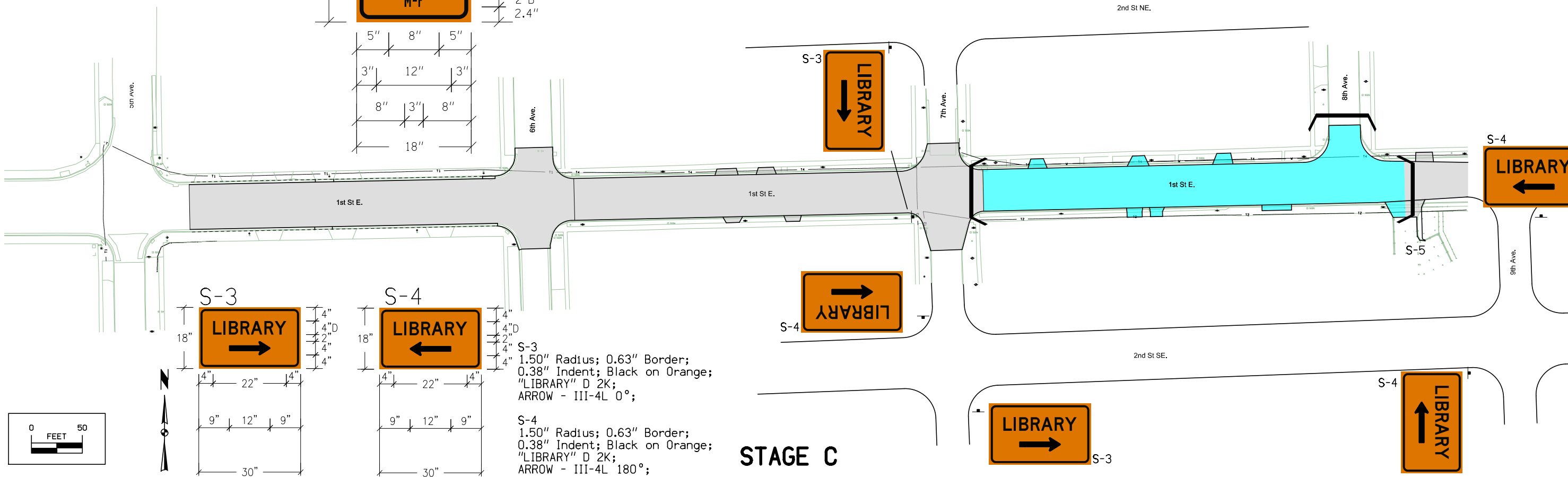
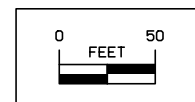
**STAGE A (WEST)**



**STAGE B**

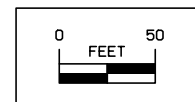


S-5  
 SHALL BE USED FOR CEDAR VALLEY HOSPICE AND PLACED AT THE LIBRARY IN A LOCATION ASSIGNED BY THE ENGINEER AT THE TIME OF CONSTRUCTION. 5 OF THESE SIGNS WILL BE REQUIRED.  
 2.25" Radius; 0.88" Border; 0.63" Indent; Black on Orange;  
 "C.V." B 2K; "HOSPICE" B 2K; "PARKING" B 2K;  
 "8:30 AM" B 2K; "TO 4:30 PM" B 2K; "M-F" B 2K;



S-3  
 1.50" Radius; 0.63" Border;  
 0.38" Indent; Black on Orange;  
 "LIBRARY" D 2K;  
 ARROW - III-4L 0°;

S-4  
 1.50" Radius; 0.63" Border;  
 0.38" Indent; Black on Orange;  
 "LIBRARY" D 2K;  
 ARROW - III-4L 180°;



**STAGE C**